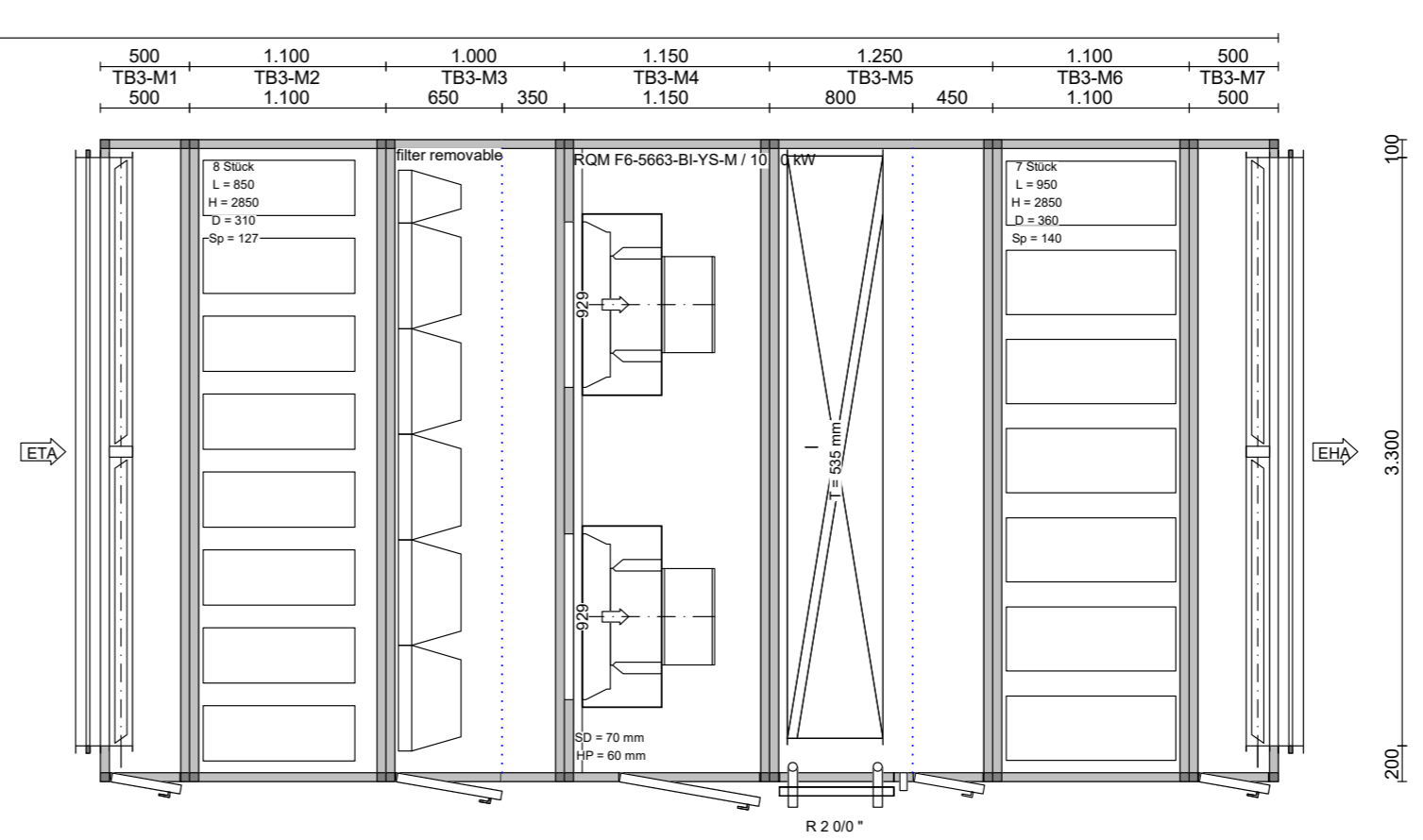
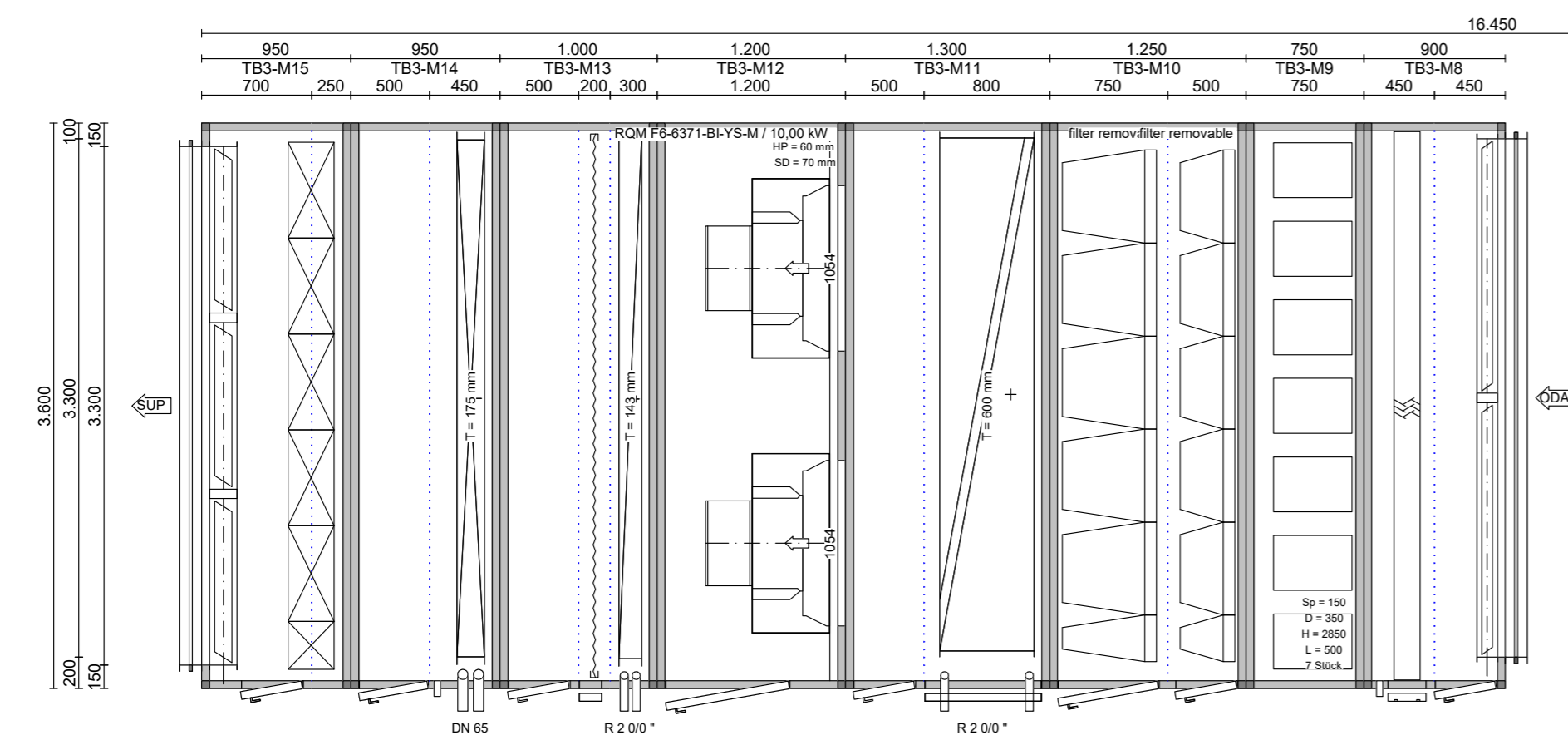
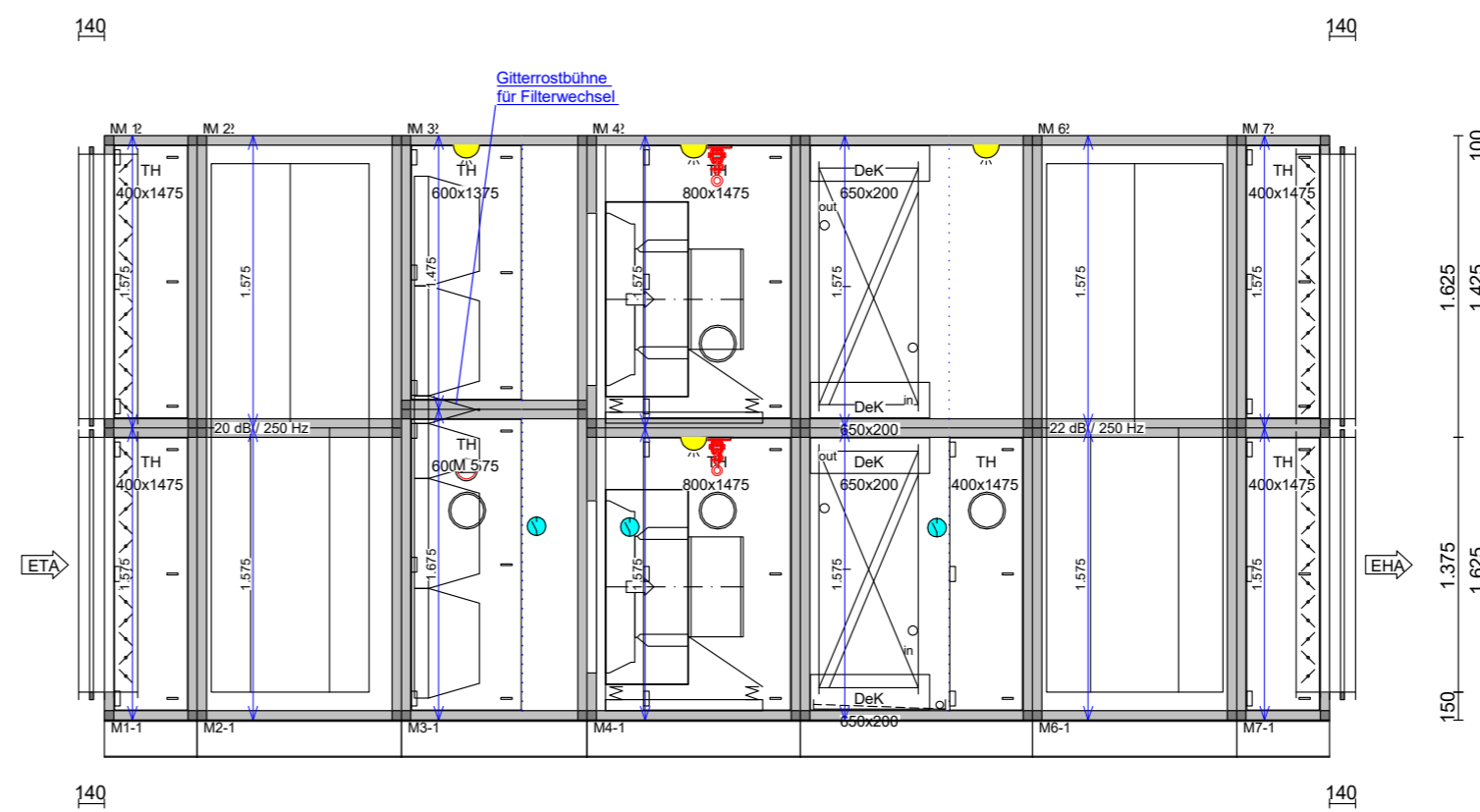
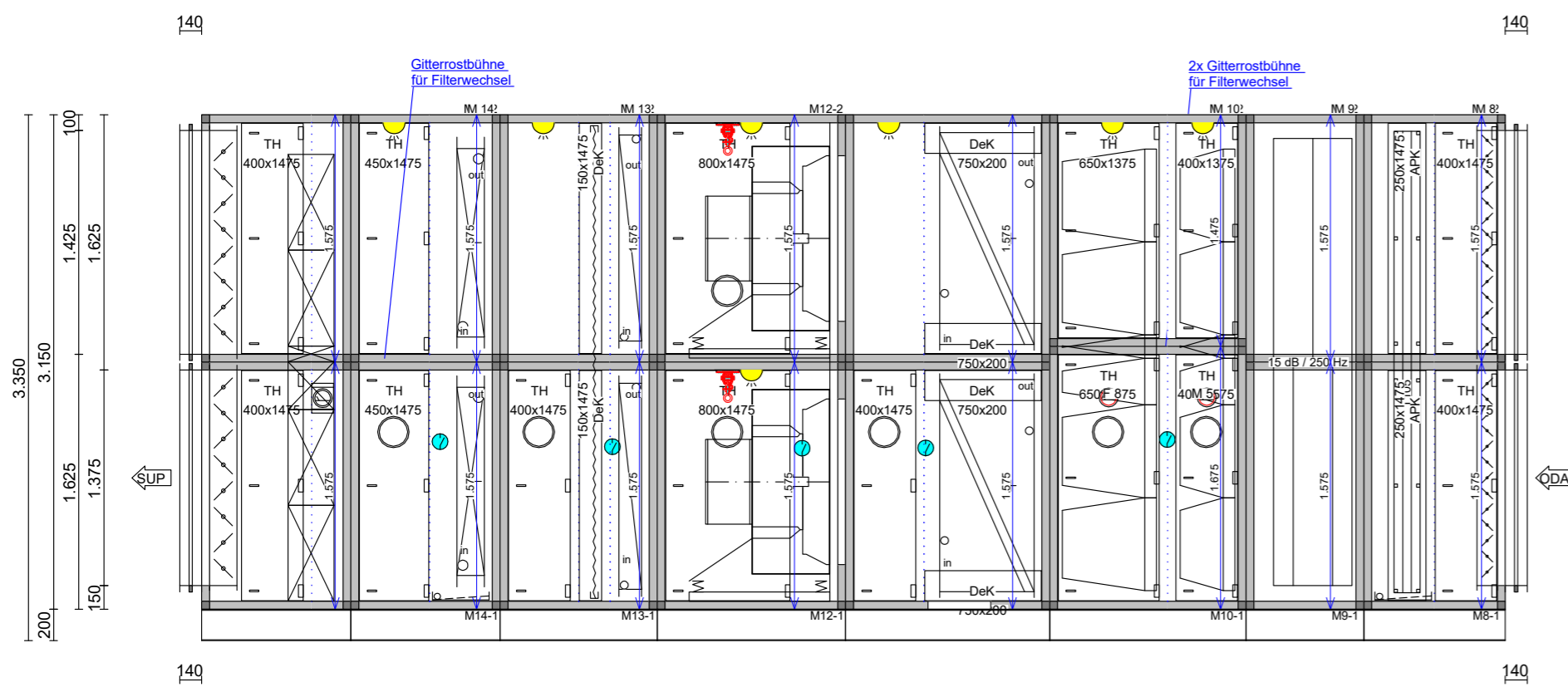


- lose Liefern / loose:
- 1 Set Montagematerial / mounting equipment
  - 3 St. Siphon / siphon
  - 1 Set Absolutfilter-Bestückung / filter
- Zubehör: / accessories:
- Filter / filter:
    - 4 St. Zeigermanometer MAG2000, 0-500 Pa, ohne elektr. Kontakt / pointer manometer MAG2000, 0-500 Pa, without electric
  - Ventilator / plug fan:
    - 2 St. Volumenstrommesseinrichtung / measuring device for volume flow measurement
    - C3 Beschichtung + STST Schrauben
  - Potentialausgleich / ground wire
  - Lieferung ohne Taschenfilter / delivery without pocket filter



base frame UB200 (Mounted)

- removal lifting beam
- LED basket lamp plastic / 7 W
- Switch for Illumination

APK panel removable with clip  
TH door standard with lever

ETA Exhaust air  
EHA waste air  
SUP Supply air  
ODA outside air

no.	Width	Height	Length	Weight
1-1/2	3.600	3.150	500	592
2-1/2	3.600	3.150	1.100	884
3-1/2	3.600	3.150	1.000	717
4-1/2	3.600	3.150	1.150	1.658
5-1/2	3.600	3.150	1.250	1.922
6-1/2	3.600	3.150	1.100	919
7-1/2	3.600	3.150	500	592
8-1/2	3.600	3.150	900	1.260
9-1/2	3.600	3.150	750	877
10-1/2	3.600	3.150	1.250	1.413
11-1/2	3.600	3.150	1.300	2.496
12-1/2	3.600	3.150	1.200	2.194
13-1/2	3.600	3.150	1.000	1.105
14-1/2	3.600	3.150	950	1.130
15-1/2	3.600	3.150	950	1.420

Others 0

M: 1:40 Total unit weight ca. 19.184 [kg]

Execution : Indoor Unit

1	Pcs Supply	Silver M 19
Airflow	m <sup>3</sup> /h	63.000
dp static	Pa	1501
1	Pcs Exhaust	Silver M 19
Airflow	m <sup>3</sup> /h	63.700



Drawn Christian Moser DIN A2  
Date 17.08.2021 Index:

